

| about heatboss®

heatboss is an innovative wireless heating control solution for existing commercial and public buildings. It's simple and quick to fit and allows you to control the temperature in each room – from anywhere in the world!

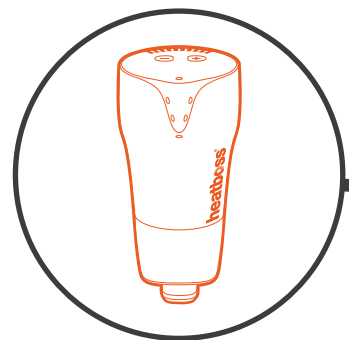
heatboss has revolutionised how people interact with their heating systems, providing you with more control, less waste and a far better user experience.

- **Easy to fit** – heatboss is designed for an easy retrofit – an average installation takes 1-2 days and the heating does not need to be off
- **Easy to use** – heatboss uses a very simple webpage to let you control your heating
- **Easy to customise** – heatboss can be tailored to suit the heating requirements of each individual room
- **Easy to access** – heatboss allows you to control your heating via your PC, Mac, smartphone or tablet anywhere in the world
- **Easy to manage** – heatboss has a team of engineers supporting you and monitoring your heating to ensure that you get the most of your energy usage
- **Easy to save** – heatboss only heats where and when you need it, so the savings come naturally. Our clients are saving on average 30% of their heating costs.



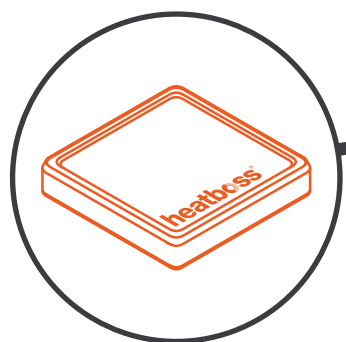
how it works

WIRELESS VALVE



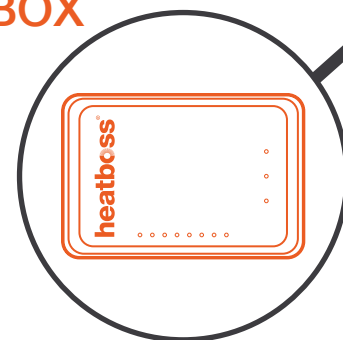
Controls the radiator(s) in each room based on the desired target room temperature
(which is communicated wirelessly to it from the hub)

HUB



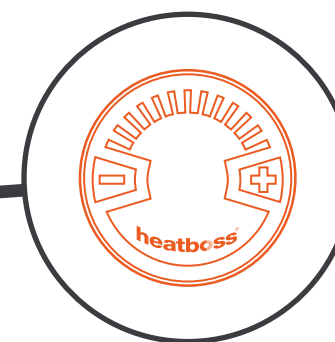
Holds all the heating schedules i.e. the on/off times and associated target temperatures for each room;
Communicates wirelessly to all devices;
Enables remote access to heatboss from any web enabled device.

BOILER (SWITCH) BOX



Controls the boiler(s) and zones and integrates with BEMS; and turns the boiler/zone off when all rooms are at their target temperature and on again when they dip below target.

ROOM STAT



Monitors the ambient room temperatures, relative humidity levels and motion and communicates this data to the hub;
Allows users to amend the room temperature or boost the room's heating.

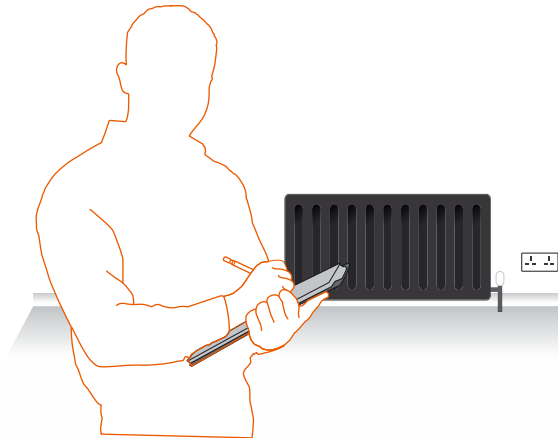
WEB APP



Allows users to monitor and control their building's heating from anywhere.



| how it works



01

Site analysis

To start, we'll arrange for an expert engineer to visit your building and carry out site analysis. They will:

- Check to ensure heatboss is right for your building
- Carry out an analysis of your heating needs

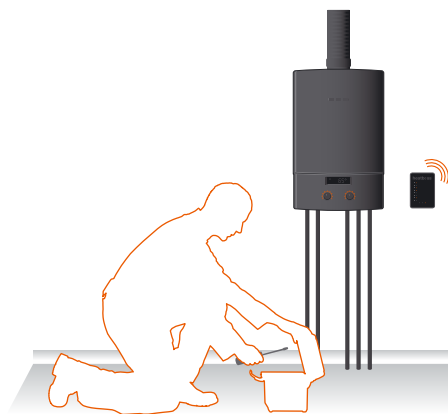
Following the site visit, we'll know how many heatboss devices you'll need to obtain maximum savings and if you want to progress, you'll receive a quotation within 24 hours.



02

Initial setup

Once you've placed your order, things can move as fast as you'd like. We can setup your heatboss system at our office – this will vastly reduce the amount of time we need to be in your building. We can have the rooms, on and off times and target temperatures all preset for you, based on what you have told us. In fact, we can fit an average system in 1-2 days - without the heat ever needing to be turned off.



03

Retrofit to boiler

In many buildings we can fit the heatboss boiler controller to enable additional efficiency gains. Our engineer will ascertain whether this is appropriate during the initial site visit and if so, during the installation they will simply disconnect your current heating timer and replace it with the heatboss boiler control. If your building is already zoned, the heatboss boiler controller can control up to 8 existing zones.



04

Retrofit to radiators

If your radiators have thermostatic valves (i.e. those that turn from 0-5) then changing to heatboss is easy. We will simply unscrew the current valve and replace it with a heatboss valve. We will then place a heatboss wireless thermostat at the optimal place in the room for sensing ambient temperature. The heatboss system communicates wirelessly to each device, reading data from the thermostats and telling the radiator valves when to open and close to let the required heat through.

If you don't currently have thermostatic valves, that's not a problem, we can help you with the process of changing them over.



05

Go live & training

Once all the rooms are setup all our engineer needs to do is enable remote access to heatboss via your broadband connection (or a mobile internet dongle - if you don't have broadband) and you're up and running! The heatboss interface is really easy to use and we'll talk you through it step by step. We won't leave you until you're happy you know exactly how it works.



06

Start saving

From here on, you and your staff can access your heating controls from your PC, Mac, smartphone or tablet - from anywhere in the world. You can monitor and change your settings to optimise savings and comfort levels. Now that you are only heating where you want, when you want, the savings come naturally and because everyone's room is heated just how and when they like it - everyone is comfortable.

the savings

heatboss has been developed using innovative technology to prevent wasting fuel and reduce heating costs. How you'll save:

- The heat is only on where and when it is needed instead of heating everywhere
- heatboss turns the heat off as soon as a room reaches its target temperature and maintains this
- As the heatboss rooms turn off quicker, the excess heat within the system causes the boiler to turn off quicker too

How heatboss saves

Whilst heatboss has saved more than 40% in some buildings, the average savings for our customers is verified at 30%. The saving levels will depend on how many of the buildings' radiators we can control - the more we control, the more you save. And on top of this, you'll be doing your bit to reduce greenhouse gas emissions – so everyone's a winner.

the features

What else can it do



General

- Frost Protection
- Setback temperature both day & night - Keeping your building maintained just the way you like it
- Optimal start - wake up to your room at the correct temperature
- Sticky valve protection - reduces risk of valves sticking during summer when heating is off.
- Holiday mode - when your away we take care of your building
- Disable room - save while your room is unoccupied
- Damp detection
- Hotwater control



Reports

- Battery level warning - indicates any devices where the batteries are low.
- Energy used / room - highlights the inefficient rooms.
- Boiler runtime - shows how long the boiler ran in any given day / week / month / year



Avoid misuse

- Max and Min temperature limits - setting temperature boundaries
- Child lock - stop the little ones turning things on/off
- Audit trail - see details of who did what and when in the system
- Theft detection - notify you if any heatboss devices have been taken and installed elsewhere.



Security

- Secure login
- Encrypted communication - keep your data safe
- User Role levels - specify who can do what in your building
- User management - add or delete users to your building(s)
- Multi site login - switch building without re-logging in
- Nightly backups - ensuring your data is kept safe and current