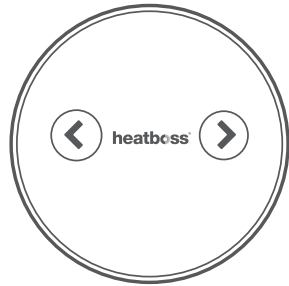


heatboss®

Thermostat Installation Guide



01

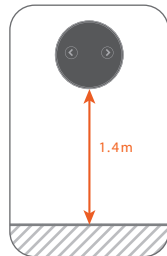
Introduction

heatboss® thermostat is an intelligent wireless temperature, humidity and movement sensor. It is installed in a room to monitor and control the heating along with heatboss® wireless valve.

02

Pre-install

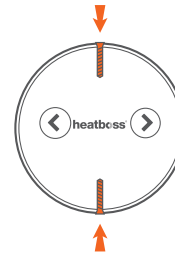
- Determine if the heatboss® thermostat is going to be powered from the mains power supply, if so, the thermostat Power Module will need to be installed. The module will be installed inside a single gang wall socket.
- Screw/stick the white back plate onto an internal wall. Ensure that it is mounted level with the arrow pointing upwards and away from heat sources. e.g. radiators, electric heaters, direct sunlight, doors, draughts etc.
- Ensure thermostat has good air circulation and mounted 1.4m from the ground.



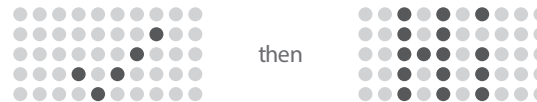
03

Install

- Log on to heatboss® user interface.
- Select Zone, Rooms & Controllers from the dropdown menu.
- Select the desired room you want to install the thermostat to and click "add device"
- Pull out battery tab on thermostat and mount onto back plate, then attach both screws.
- The thermostat will scan for the hub, this takes up to 30 seconds, whilst this is happening the stat will display the symbol to the right.




- After around 30 seconds the stat will display...



- The thermostat is now successfully installed.

04

Customise Schedules

- On the heatboss® user interface you can now set on/off times and temperatures for the room the thermostat is linked to.
- Simply click the  icon and create schedules.
- These schedules will be sent wirelessly to the thermostat within 10 minutes (at the very most).

05

Display Symbols



Scanning for hub



Synchronised to hub/
operation successful



Reset in operation



Battery low / battery
mode selected



Main mode selected



Set-up complete



Stat disabled - No
schedule will be
run. Re-enable from
user interface



Child lock - Stat input
is locked out and can
only be unlocked from
user interface



Network loss



All LEDs flashing
Factory reset performed



Yellow flashes once per minute
Battery low



Green illuminated when
setting target temperature
Within Eco range i.e. 17 - 19°C



Yellow illuminated when
setting target temperature
Within 19 - 22°C



Red illuminated when
setting target temperature
High i.e. 22°C +

06

How do I...

Display room temperature

Press or once.

Increase room temperature

Press for 3 seconds until display starts to flash. This brings you into target temperature edit mode. Press until desired target temperature is obtained.

Decrease room temperature

Press for 3 seconds until target temperature starts to flash. It will show the current target. Press until desired target temperature is obtained.

Boost

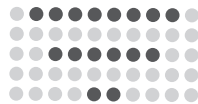
If no schedule or boost is running, press for 3 seconds. The boost target will be set to 20°C or 2°C above the current room temperature if already above 20°C.

Setup schedules

Log-on to heatboss® user interface. Navigate to the desired room and click . From here you can create, modify or delete schedules.

Reset

To reset the thermostat press and hold and buttons simultaneously for 10 seconds. The display will flash the target temperature. When device displays the symbol to the right release both buttons. The thermostat will now start to sync to hub.



Power mode

If your thermostat is powered from the mains by the Power Module it will display the symbol to the right upon startup. In this mode the relays in the thermostat Power Module are controlled.



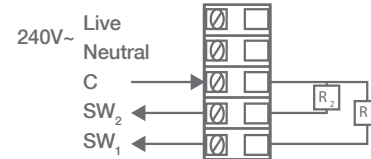
If your thermostat is powered by battery it will display the icon to the right upon startup. In this mode the relays are not controlled and the motion sensor is disabled.



07

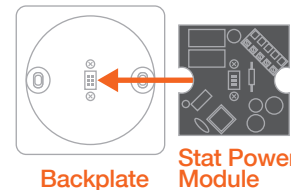
heatboss® thermostat power module

This is used to power the heatboss® stat and allows the stat to control external systems such as zone valves. It contains two relays R₁ and R₂ which are controlled for heating and cooling respectively. There is a common header input that will be switched by the relays. The common header is voltage free.



How to install thermostat power module

• Ensure module is placed the correct way up, then fix onto the back of the backplate with the two screws provided.



- Wire in power 240V AC (L = live, N = neutral)
- If the relays are going to be used to control/signal external equipment wire these now. The 'C' (voltage free) common will be switched by R₁ and R₂.
- Ensure wires are not exerting any force on any of the components of the PCB.
- Screw the back plate to the socket.

08

Stat Technical Specification

Thermostat Type	Intelligent Electronic Wireless Stat
Software Classification	Class A
Safety Classification	Class II
Battery Life	Up to 1.5 years
Power Source	2x 1.5V Lithium AA / Power Module
Measurement Interval	Every minute
Control Accuracy (temp. / RH)	+/- 1°C / +/- 5%
Scanning Temperature Range	-9°C to 45°C
Temperature Control Range	-9°C to 45°C
Size	L: 95mm Ø: 85mm
Weight	113g
IP Class	II Completely protected by its enclosure
Radio Signal	2.4Ghz mesh Zigbee

Power Module Technical Specification

Type	Use for heatboss® stat only
Safety Classification	Class II
Size	65mm x 65mm
Mechanical Contact	Relay
Relay Switch Max	5v
Relay Voltage Switched	Voltage free via C pin header

Safety Precautions

The heatboss® stat should not be used in places where it can be exposed to water.

Okotech Ltd
heatboss® team

T | +44(0)28 9422 8141
E | info@heatboss.co.uk
W | www.heatboss.co.uk

A | Unit 1, Farranshane House
1 Ballygore Road
Antrim
Co. Antrim
Northern Ireland
BT41 2RN